



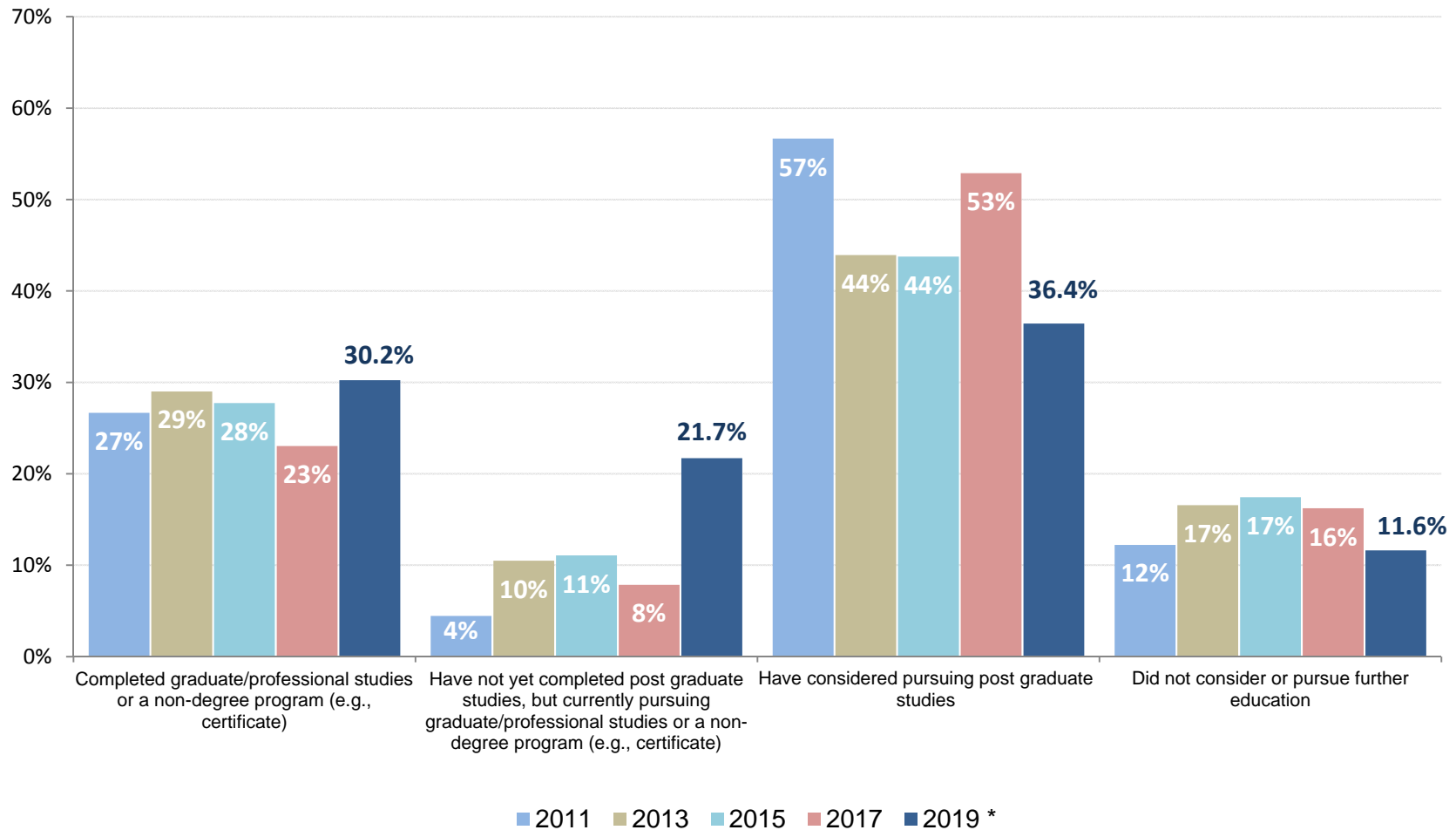
Graduate Follow-Up Survey Results 2011 – 2019



Office of Institutional Research and Assessment

Graduate Follow-Up Survey Results

Continuing Education: Post Graduate Studies

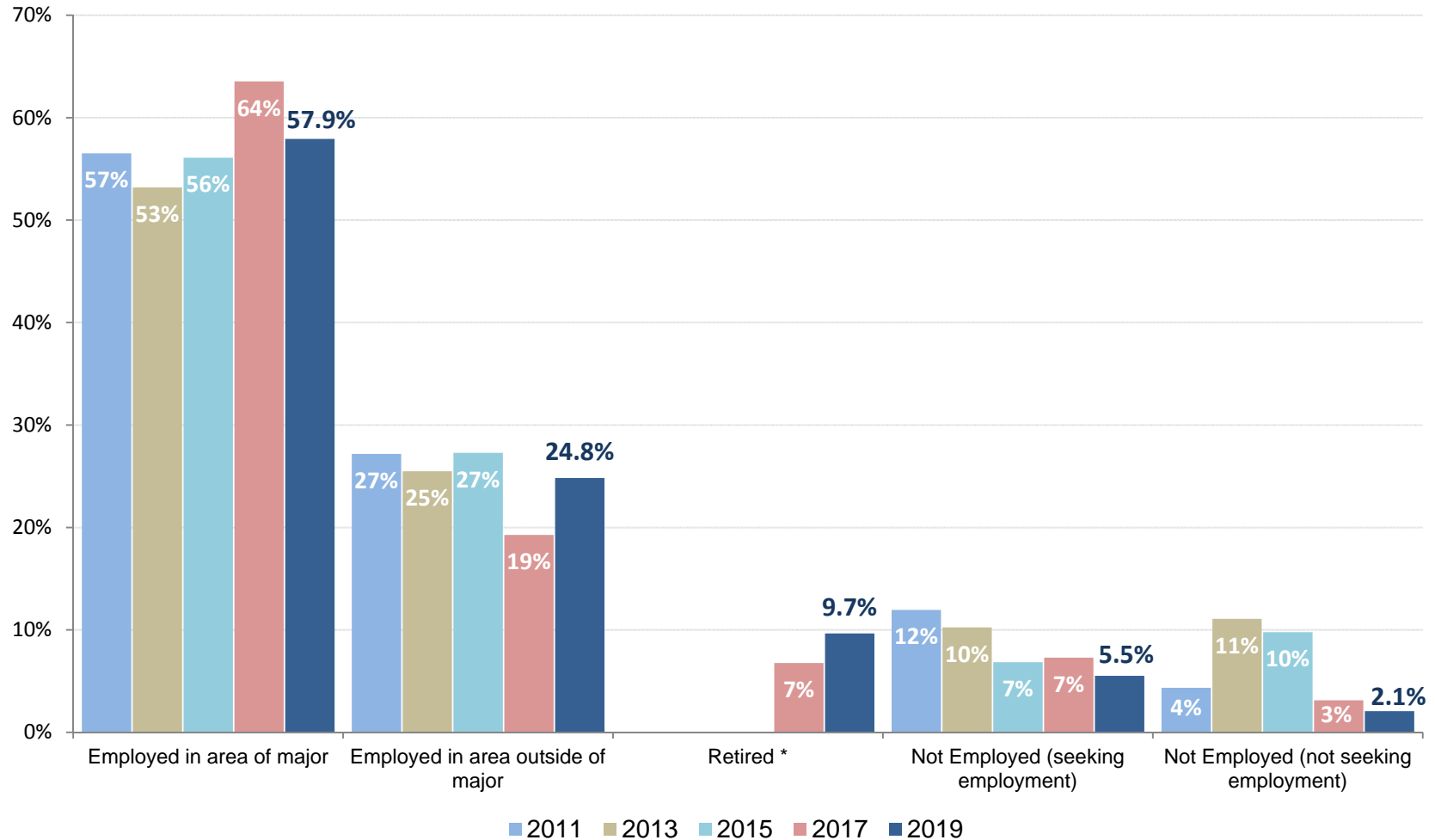


* Graduate student responses (n=14) were excluded.

Responses for each survey year: 2011 (n=123), 2013 (n=363), 2015 (n=804), 2017 (n=195), 2019 (n=145). The number of responses for each question may vary.

Graduate Follow-Up Survey Results

Employment Status

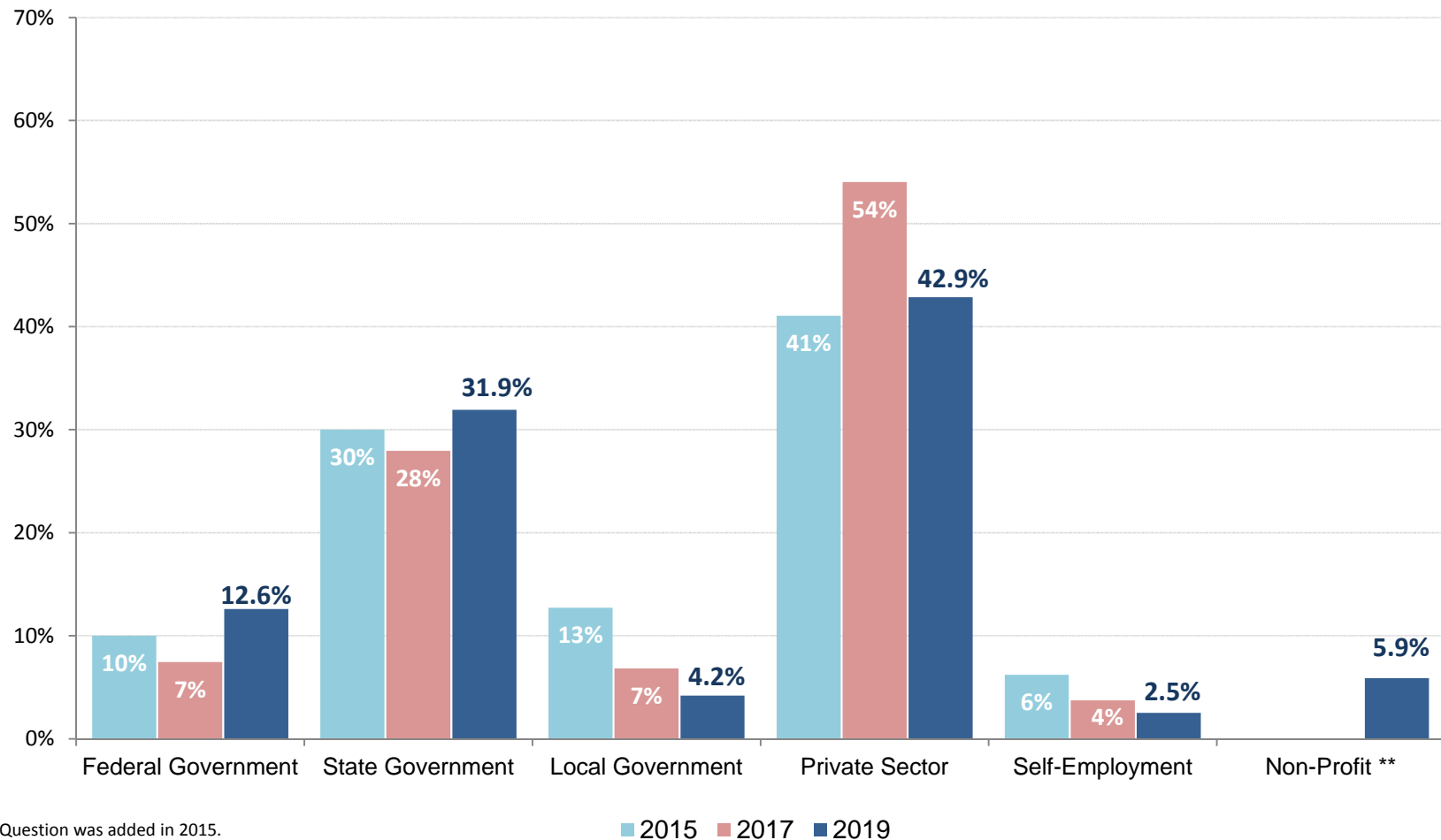


* "Retired" was added as a choice in 2017.

Responses for each survey year: 2011 (n=123), 2013 (n=363), 2015 (n=804), 2017 (n=195), 2019 (n=145). The number of responses for each question may vary.

Graduate Follow-Up Survey Results

Employer Classification *



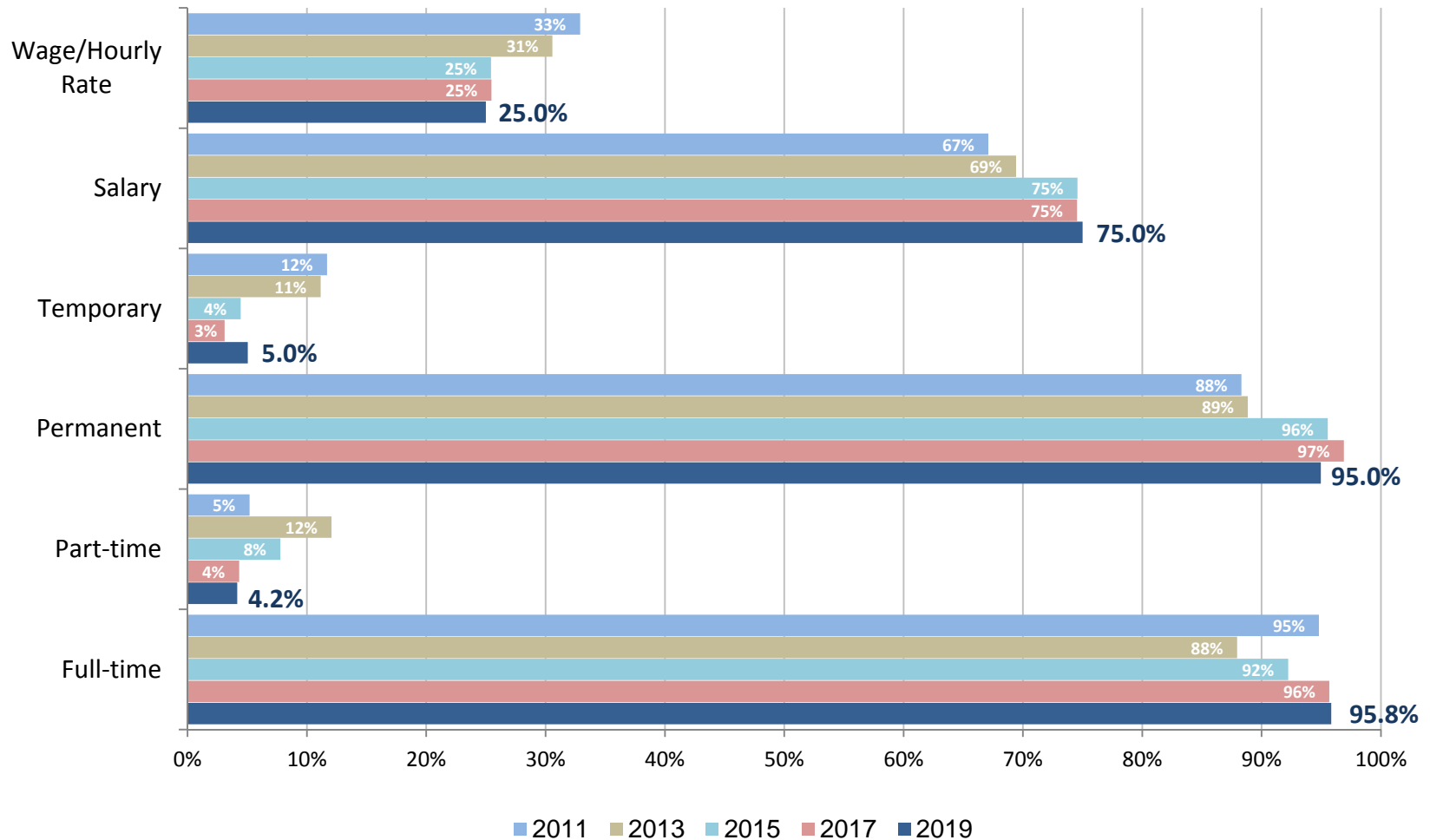
* Question was added in 2015.

** "Non-Profit" was added as a choice in 2019.

Responses for each survey year: 2011 (n=123), 2013 (n=363), 2015 (n=804), 2017 (n=195), 2019 (n=145). The number of responses for each question may vary.

Graduate Follow-Up Survey Results

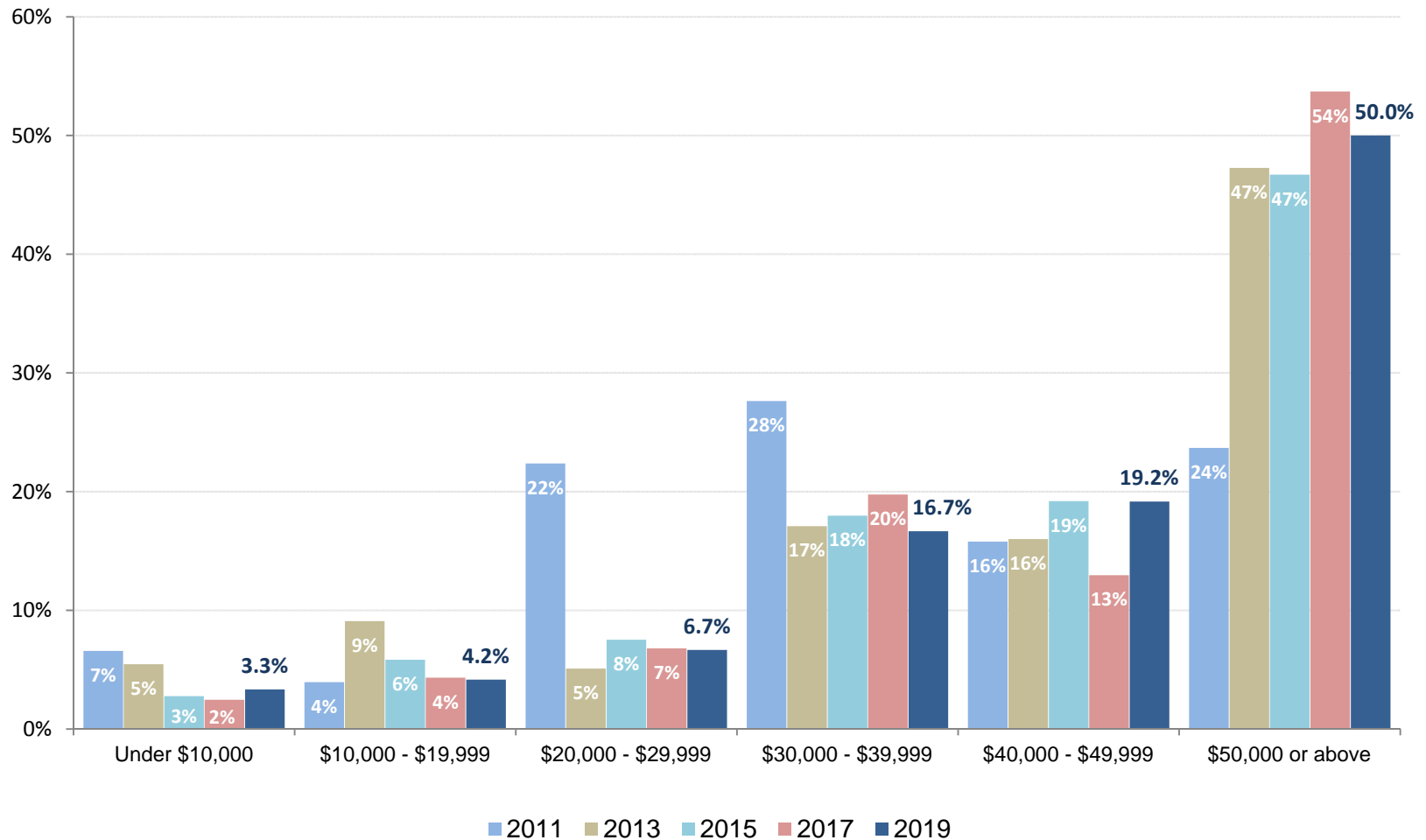
Employment Position Details



Responses for each survey year: 2011 (n=123), 2013 (n=363), 2015 (n=804), 2017 (n=195), 2019 (n=145). The number of responses for each question may vary.

Graduate Follow-Up Survey Results

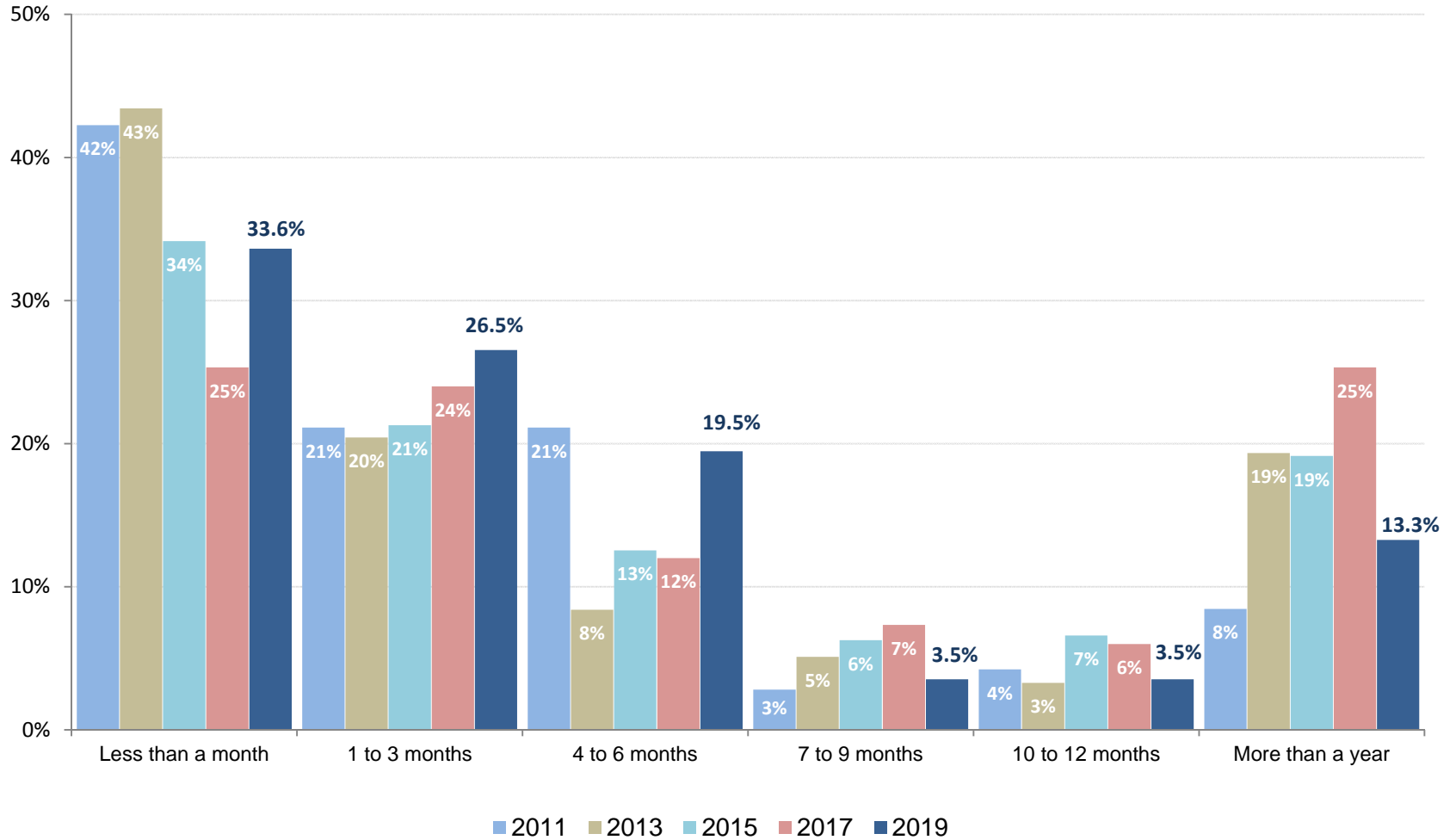
Annual Compensation



Responses for each survey year: 2011 (n=123), 2013 (n=363), 2015 (n=804), 2017 (n=195), 2019 (n=145). The number of responses for each question may vary.

Graduate Follow-Up Survey Results

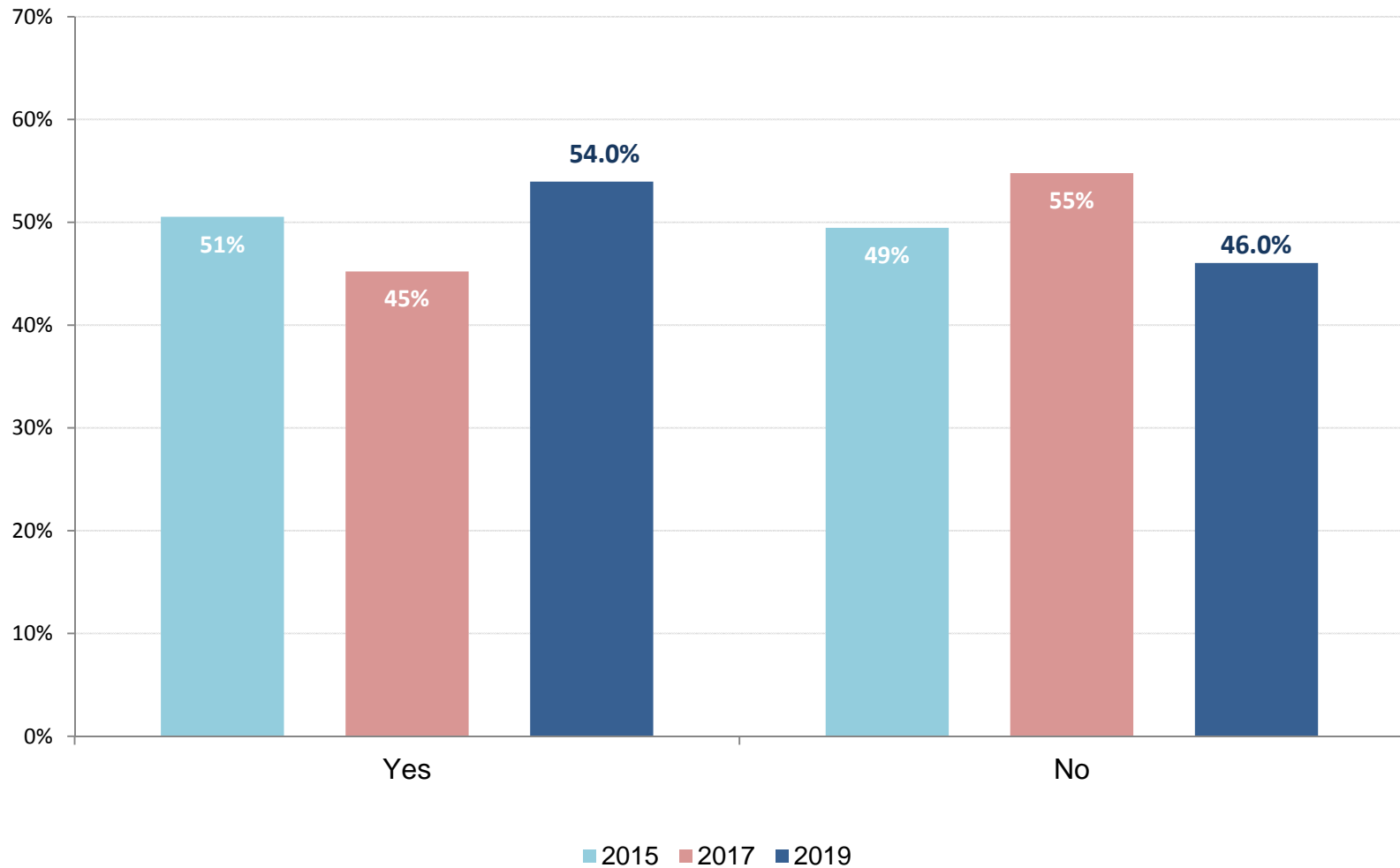
Time Taken to Find Job



Responses for each survey year: 2011 (n=123), 2013 (n=363), 2015 (n=804), 2017 (n=195), 2019 (n=145). The number of responses for each question may vary.

Graduate Follow-Up Survey Results

Participation in Volunteering *

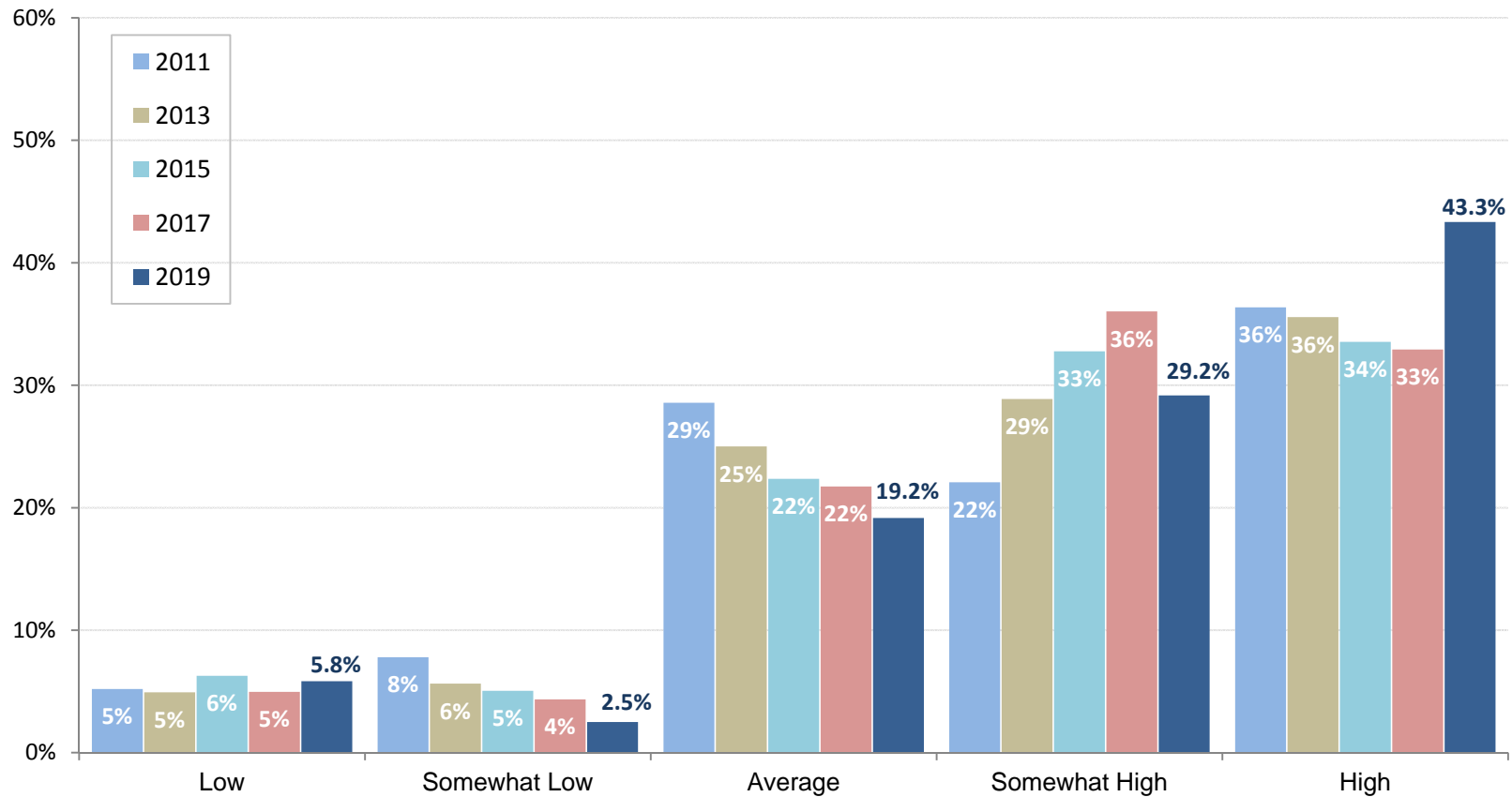


* Question was added in 2015.

Responses for each survey year: 2011 (n=123), 2013 (n=363), 2015 (n=804), 2017 (n=195), 2019 (n=145). The number of responses for each question may vary.

Graduate Follow-Up Survey Results

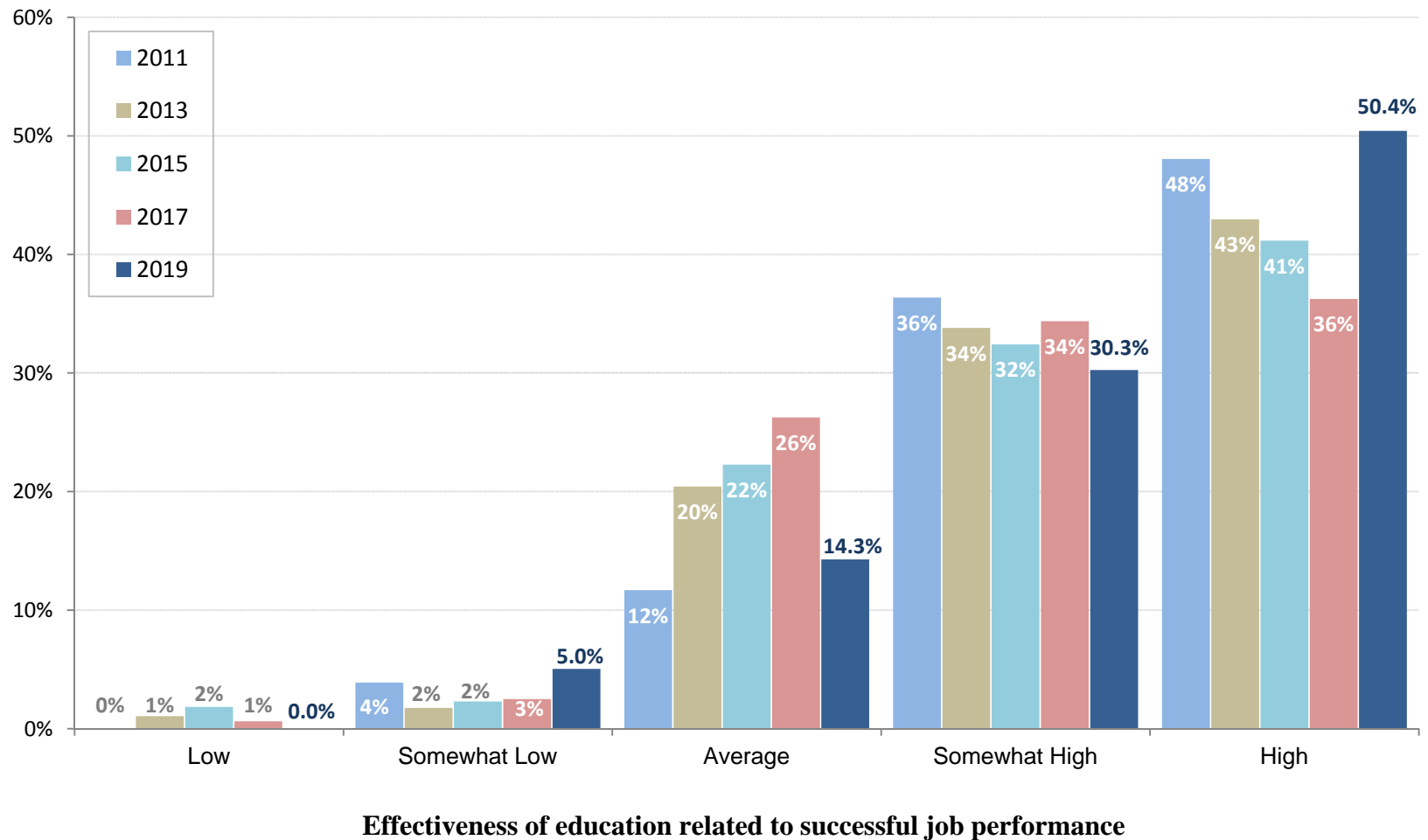
Knowledge of concepts and practices in your major as they relate to your job



Effectiveness of education related to successful job performance

Responses for each survey year: 2011 (n=123), 2013 (n=363), 2015 (n=804), 2017 (n=195), 2019 (n=145). The number of responses for each question may vary.

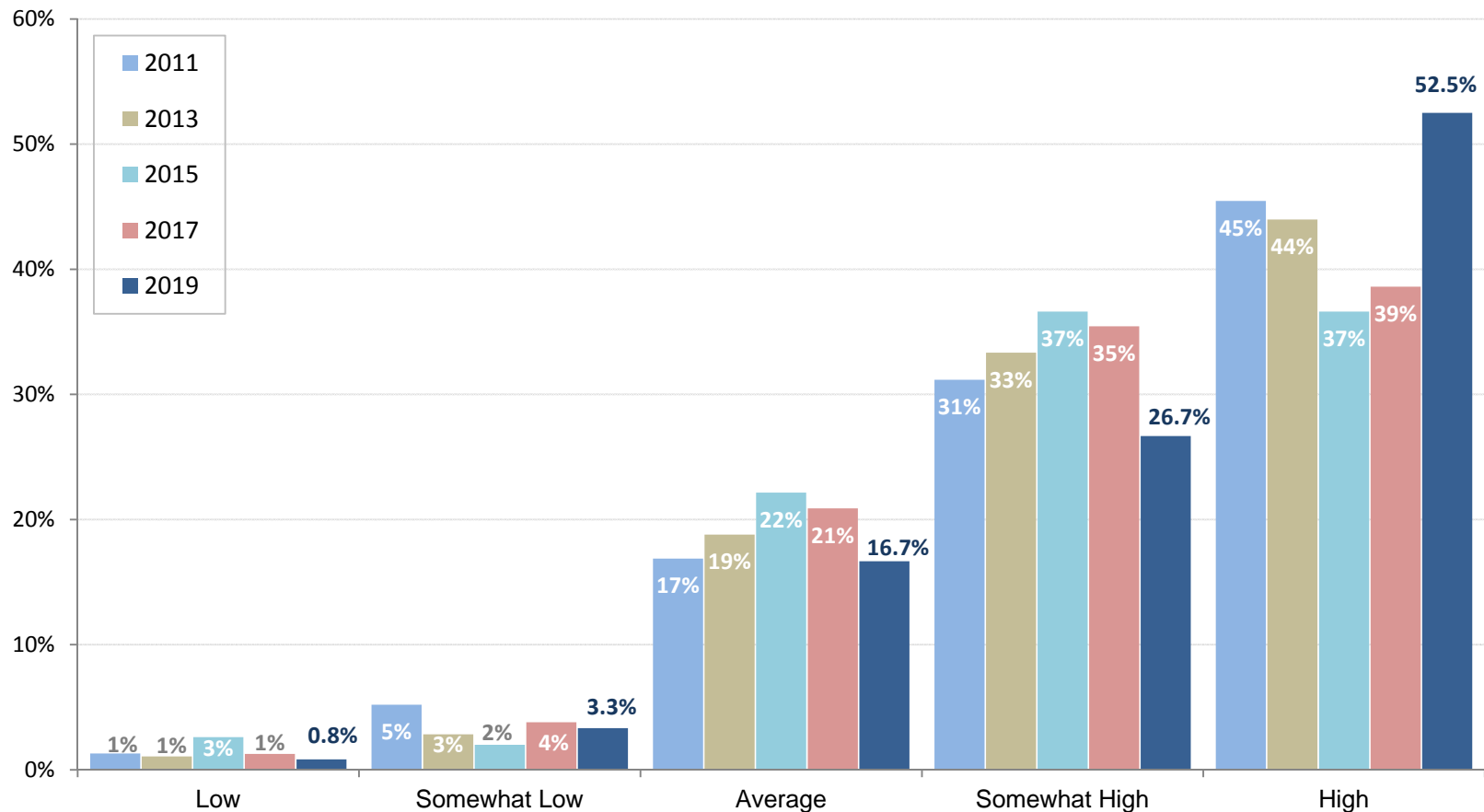
Written and oral communication skills



Responses for each survey year: 2011 (n=123), 2013 (n=363), 2015 (n=804), 2017 (n=195), 2019 (n=145). The number of responses for each question may vary.

Graduate Follow-Up Survey Results

Analytical and problem-solving skills

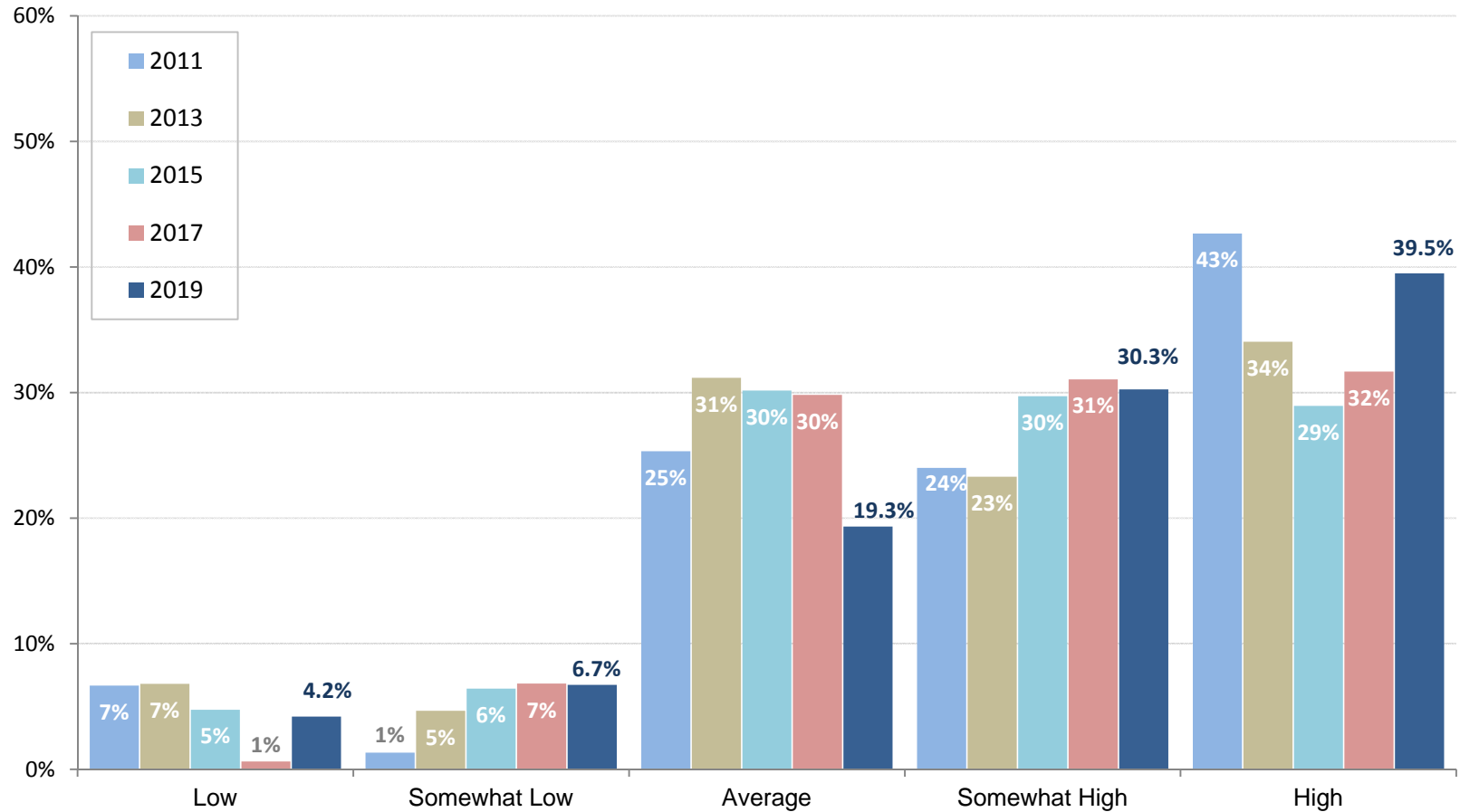


Effectiveness of education related to successful job performance

Responses for each survey year: 2011 (n=123), 2013 (n=363), 2015 (n=804), 2017 (n=195), 2019 (n=145). The number of responses for each question may vary.

Graduate Follow-Up Survey Results

Technology and Computer proficiency

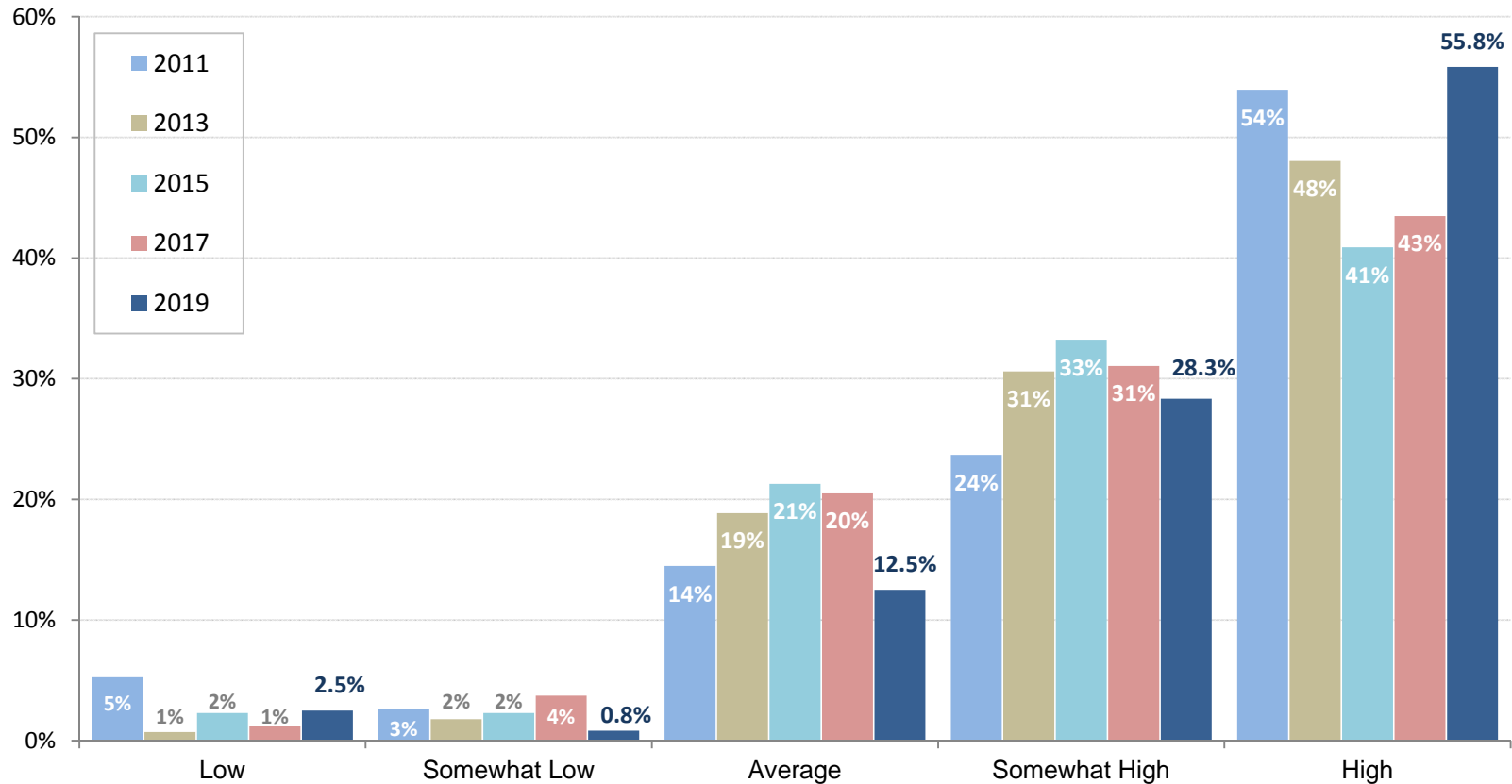


Effectiveness of education related to successful job performance

Responses for each survey year: 2011 (n=123), 2013 (n=363), 2015 (n=804), 2017 (n=195), 2019 (n=145). The number of responses for each question may vary.

Graduate Follow-Up Survey Results

Ability to work effectively with people with different backgrounds and opinions

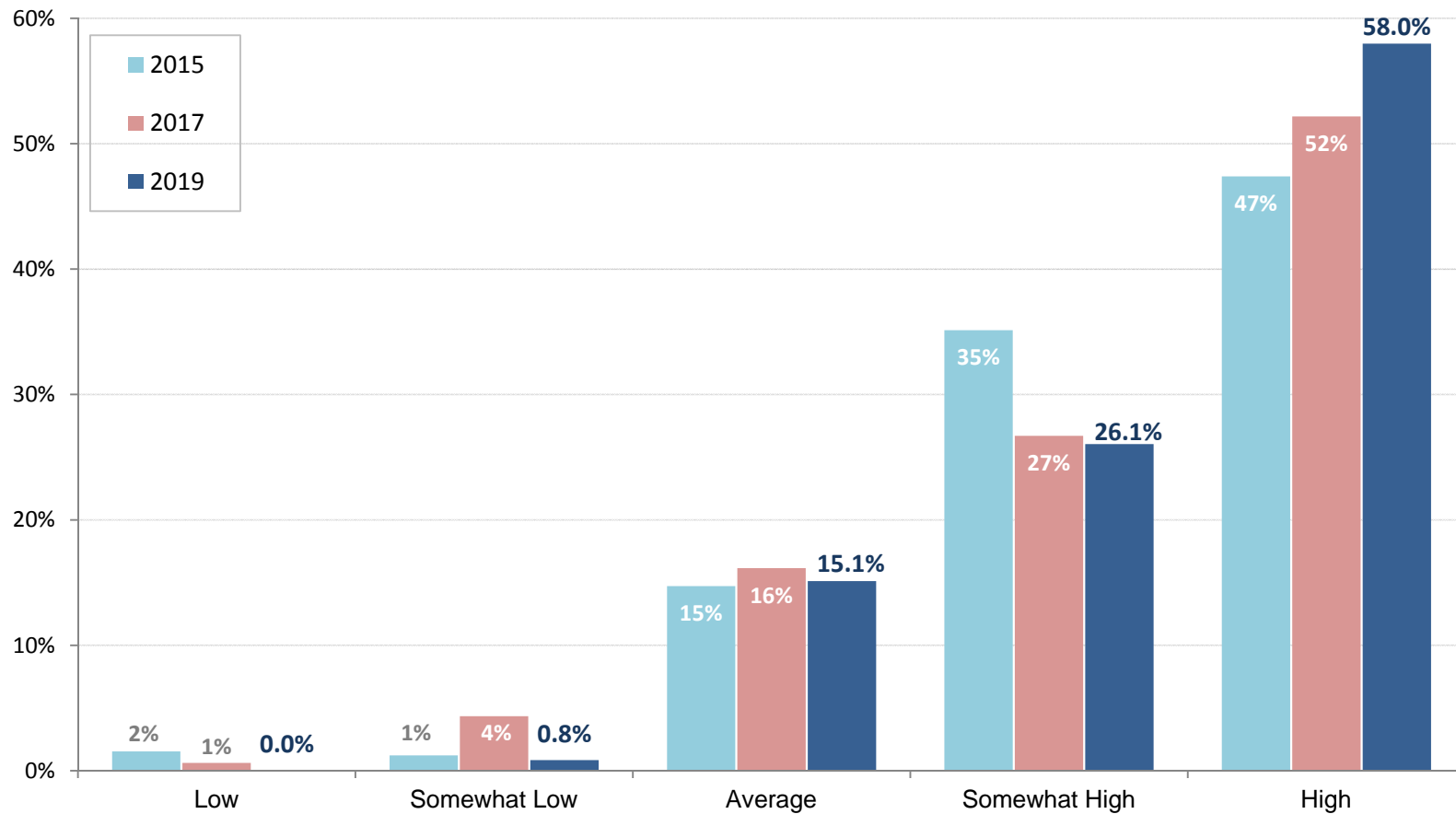


Effectiveness of education related to successful job performance

Responses for each survey year: 2011 (n=123), 2013 (n=363), 2015 (n=804), 2017 (n=195), 2019 (n=145). The number of responses for each question may vary.

Graduate Follow-Up Survey Results

Ability to gain further knowledge on your own *



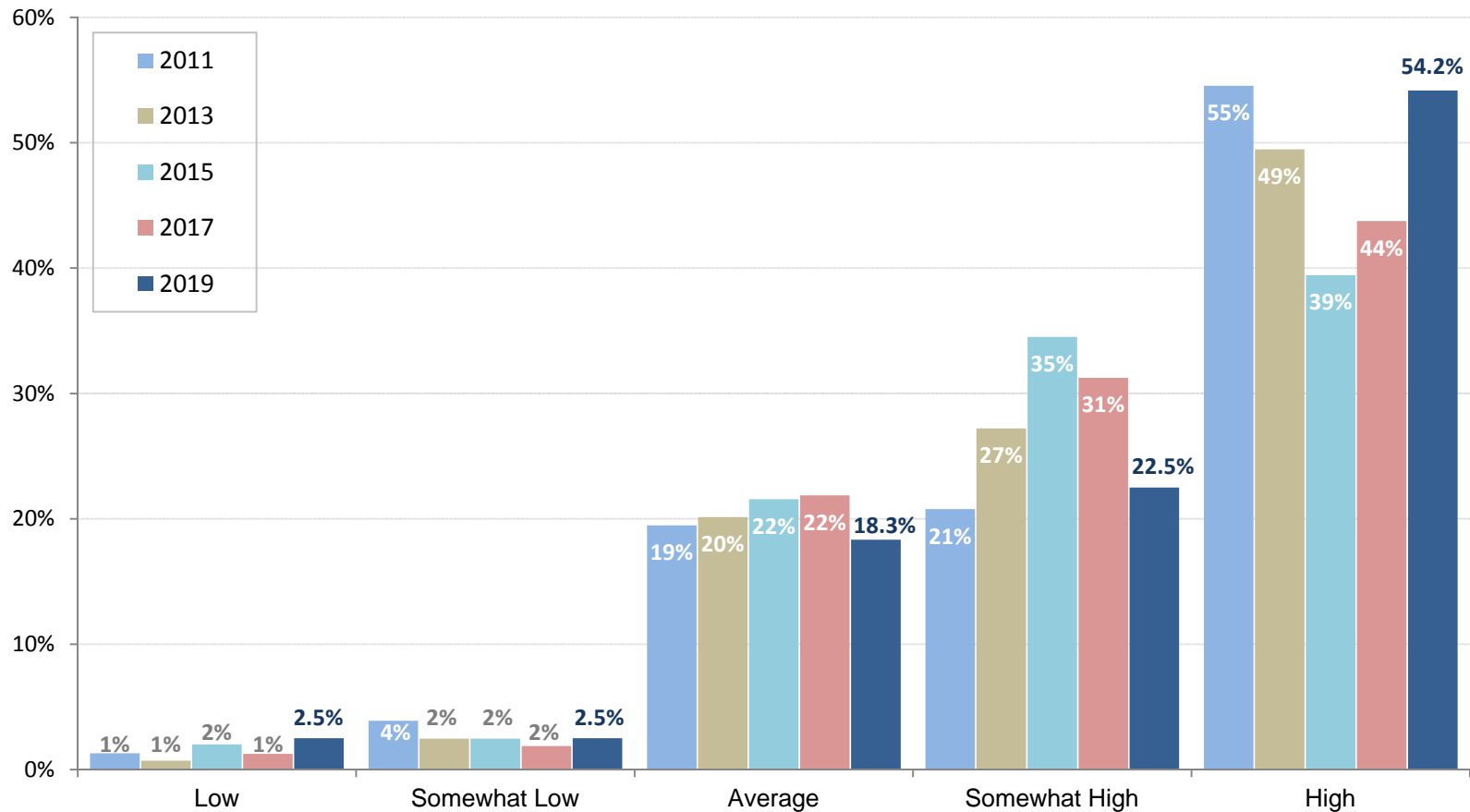
* Question was added in 2015.

Effectiveness of education related to successful job performance

Responses for each survey year: 2011 (n=123), 2013 (n=363), 2015 (n=804), 2017 (n=195), 2019 (n=145). The number of responses for each question may vary.

Graduate Follow-Up Survey Results

Time management skills to meet deadlines

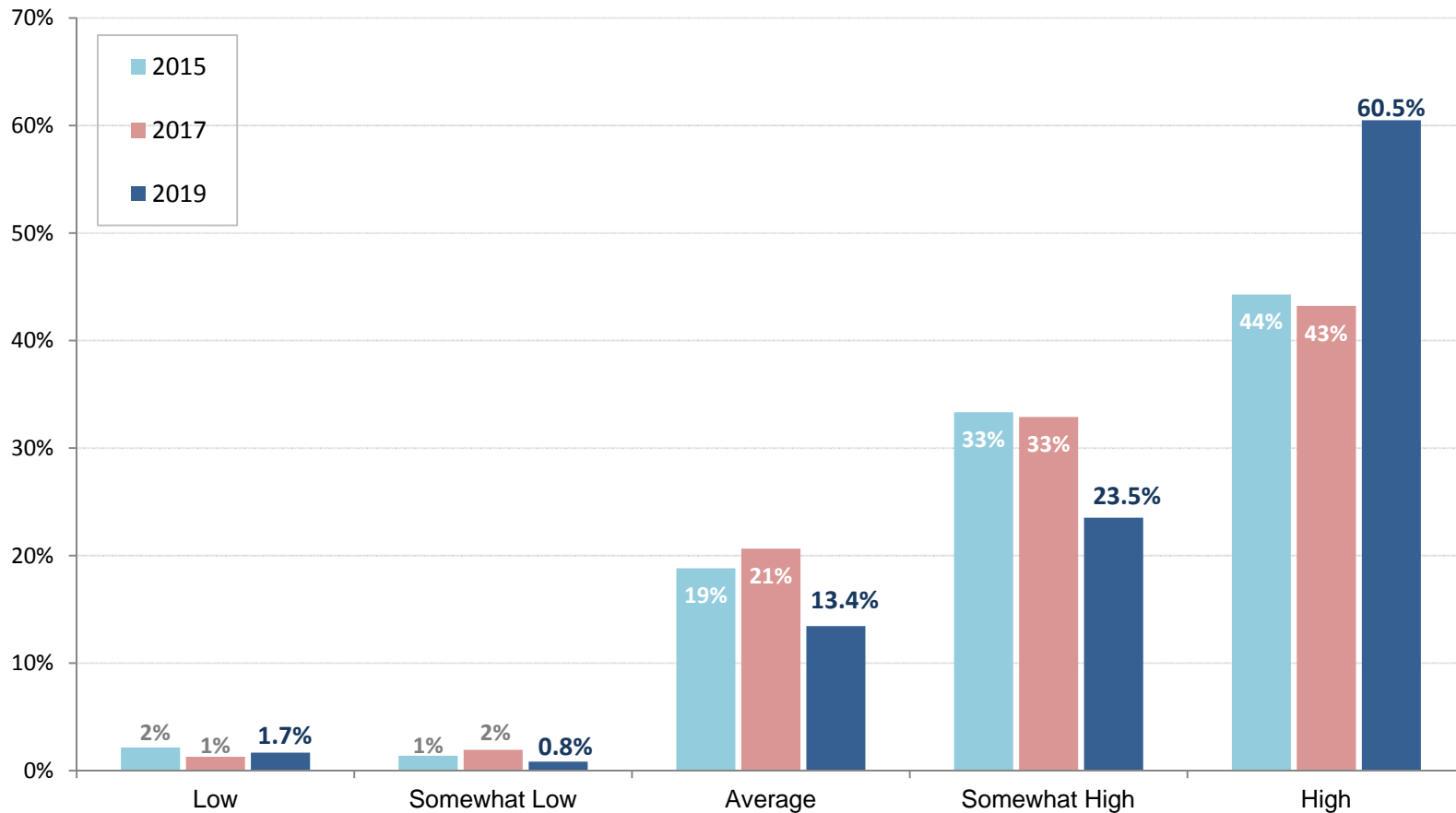


Effectiveness of education related to successful job performance

Responses for each survey year: 2011 (n=123), 2013 (n=363), 2015 (n=804), 2017 (n=195), 2019 (n=145). The number of responses for each question may vary.

Graduate Follow-Up Survey Results

Understanding and appreciation of ethical standards *



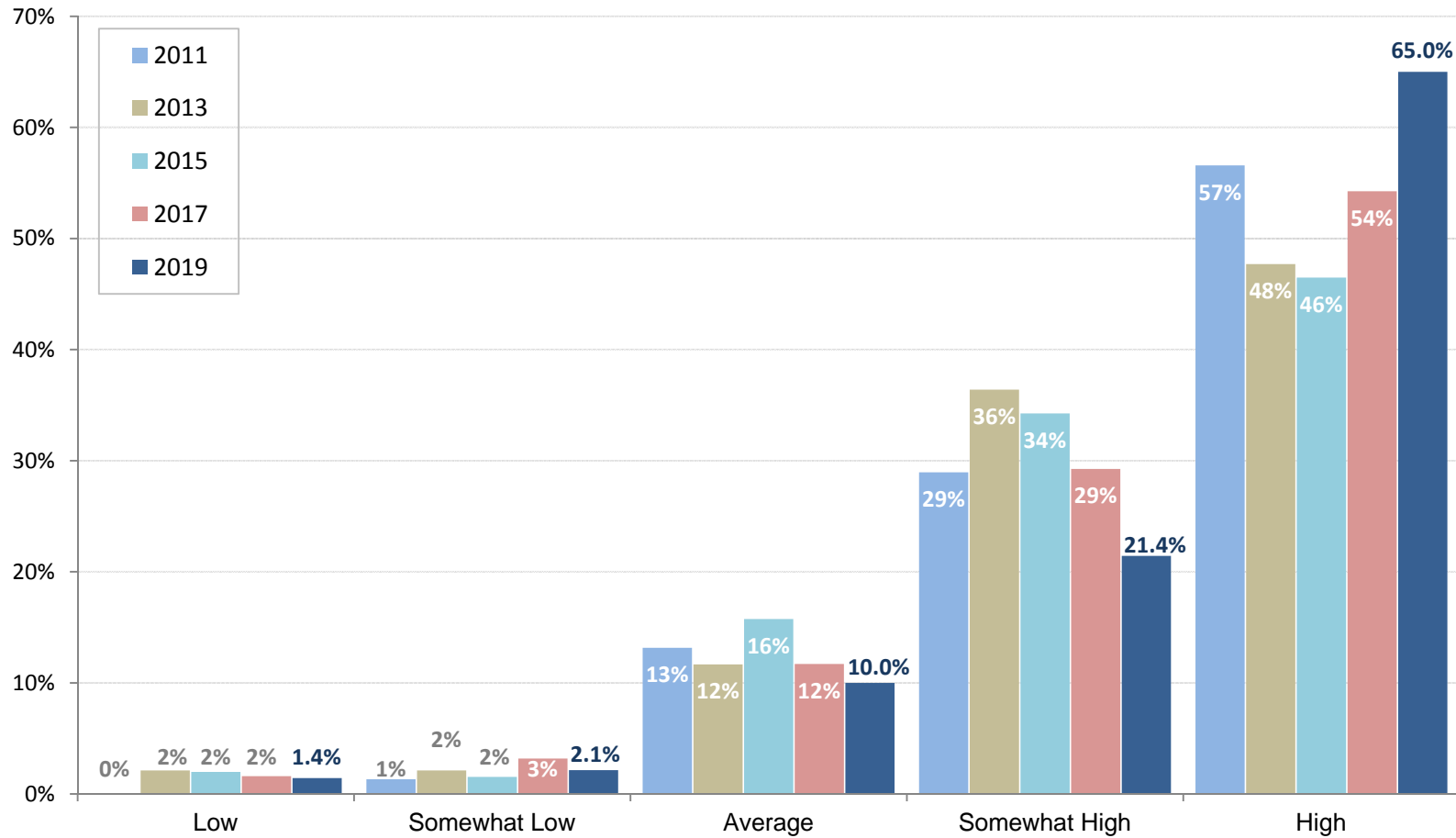
* Question was added in 2015.

Effectiveness of education related to successful job performance

Responses for each survey year: 2011 (n=123), 2013 (n=363), 2015 (n=804), 2017 (n=195), 2019 (n=145). The number of responses for each question may vary.

Graduate Follow-Up Survey Results

Overall Satisfaction with Education from Athens State University



Responses for each survey year: 2011 (n=123), 2013 (n=363), 2015 (n=804), 2017 (n=195), 2019 (n=145). The number of responses for each question may vary.